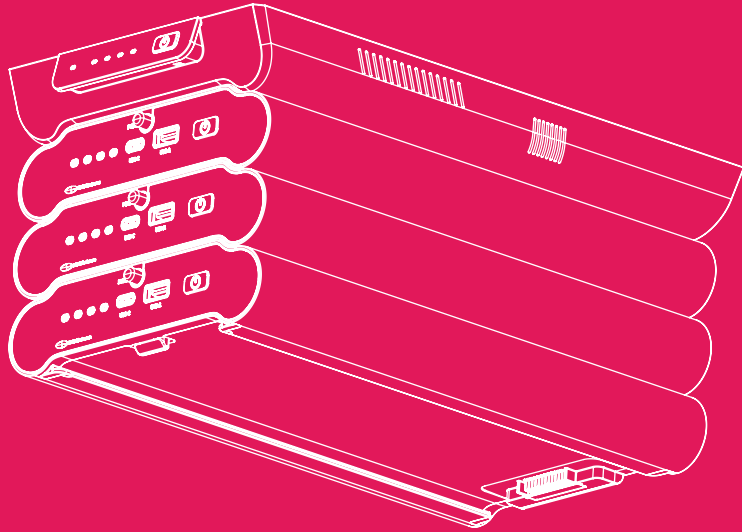
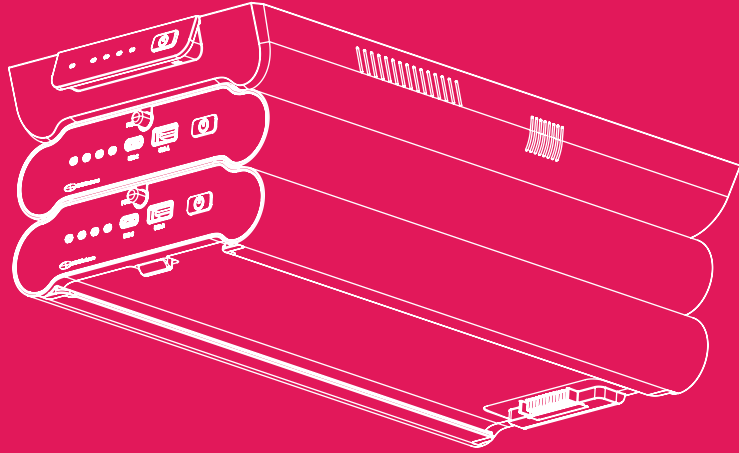
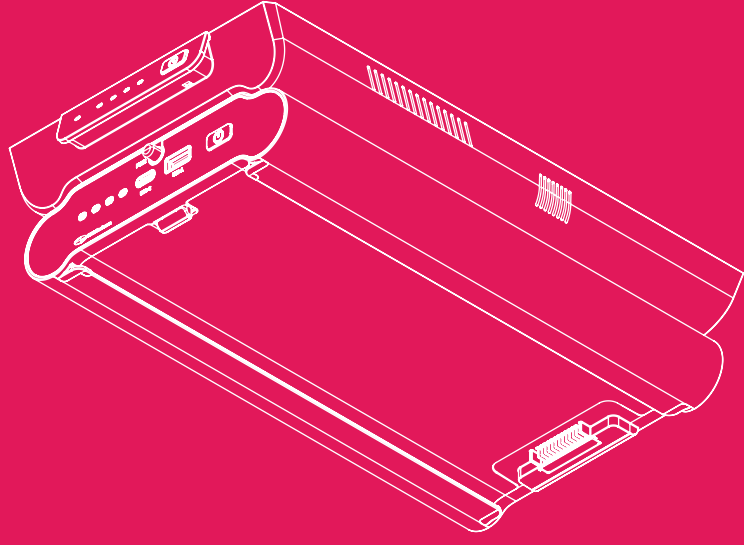


# Powering Flexible Spaces



## Freedom FR210 Series

### Taking Portable Power to the Next Level

FR210 allows you to design flexible furniture to meet the demands for the future of work. It provides the solution to enable the supply of power anywhere, anytime, without the limitations of needing to core a floor and be tethered to electrical cables in floor boxes or grommets.

Whether you need power supply to training tables and desks on wheels to lounges, loose furniture and portable AV, FR210 provides the solutions to suit the demands of the future of work...Now!

Design the Space You Want



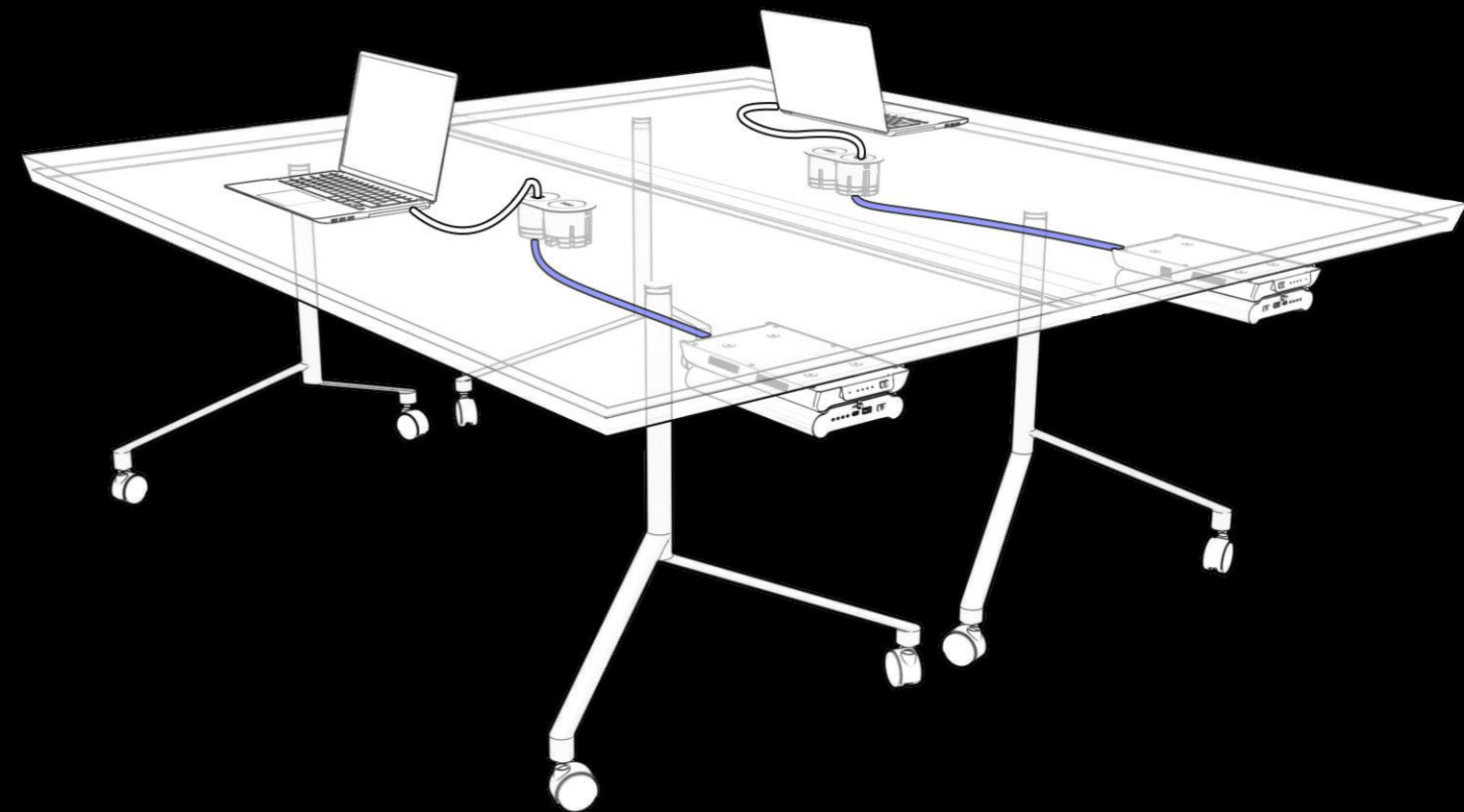


Flip/Training Tables

Multifunction Areas or Training Rooms require moveable flip tables that can be designed with maximum flexibility. The FR210 enables the added benefit of supplying portable power to these tables without the worry of running cables to power sockets or floor boxes which in turn helps you design the flexible furniture you've always wanted.



# The Ability to Design any Flexible Space

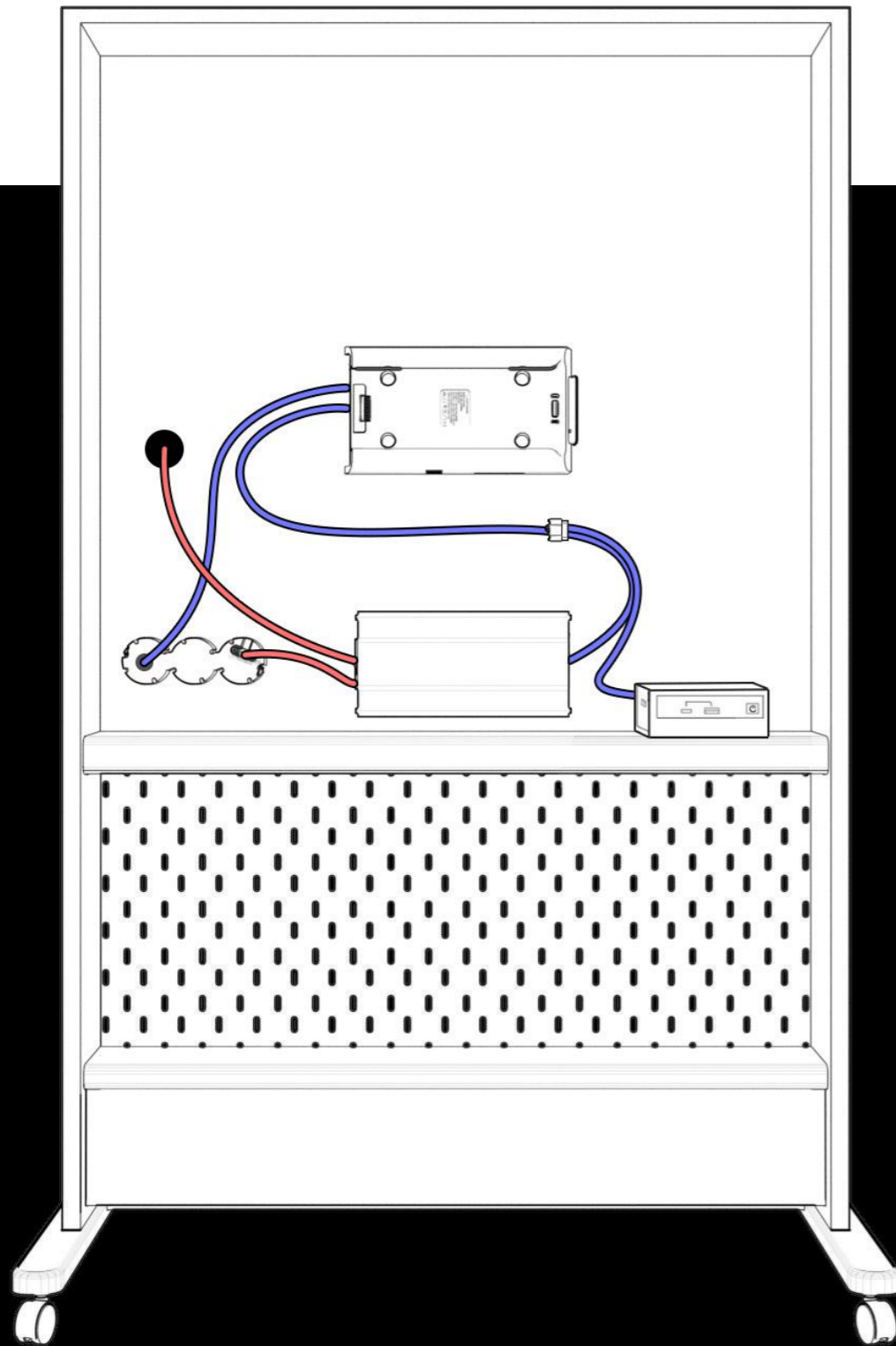


# Portable AV Stands

Create completely flexible and portable AV stands with our FR210 Flexible Power Solution. There is no need to find power to plug into, just clip in a battery pack and use your AV stand in any room.

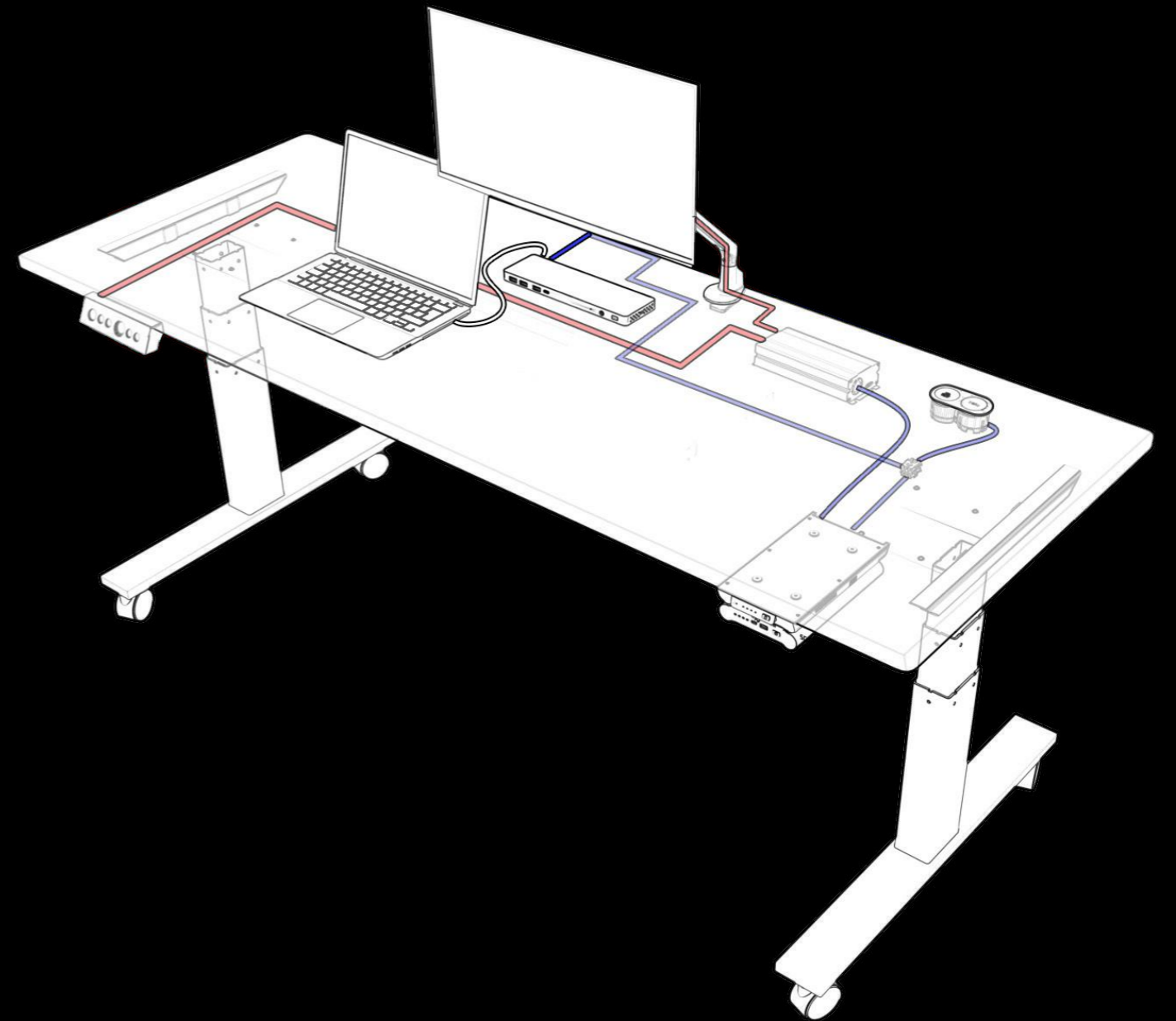


# Enable AV to Move with You



# Build Your Agile Work Area

The FR210 Portable Series is the way of the future for flexible spaces with Power Complete Workstations. It provides the capability for fast charging of laptops and mobile devices to powering height-adjustable desks with monitors. Rather than having leads run from ceiling to workstations, the FR210 enables a cable-free environment.



Workstations

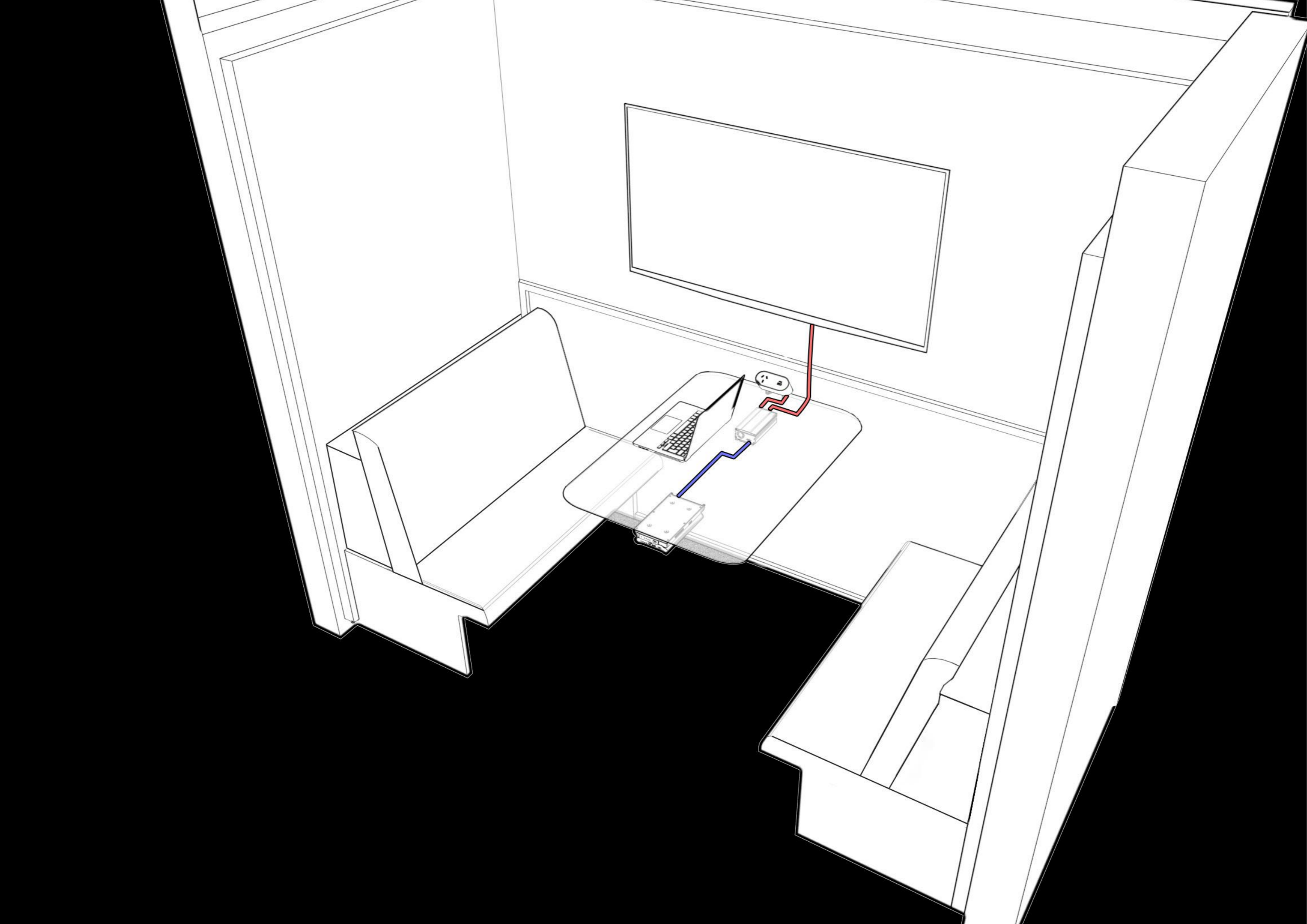




# Provide Freedom to Work in Any Collaboration Area

The FR210 Series brings portable power to collaboration spaces. Powered by battery packs and family of in-and-on desk accessories, it allows you to design the space you want without the limitation of plugging into a floorbox.







Collaboration

## REGIONAL OFFICES

Australia	1300 159 159
New Zealand	+64 (09) 582 0776
Singapore	+65 9006 0767
Malaysia	+60 162 077 106
United Kingdom	+44 (0) 7531 162 631
United States	+1 214 238 8296

## SALES & TECHNICAL SUPPORT

Sales: [sales@cmselectra.com](mailto:sales@cmselectra.com)

Estimating: [estimating@cmselectra.com](mailto:estimating@cmselectra.com)

Connect with us



[www.cmselectra.com](http://www.cmselectra.com)

Disclaimer: CMS has made every attempt to ensure the accuracy and reliability of the information provided in this document are correct. All information contained in this document is to be used for general guidance only. CMS reserves the right to change, delete or modify the information without notice.  
© CMS Electracom 2022

# FREEDOM FR210 SERIES

Powering Flexible Spaces



# FREEDOM FR210 SERIES

## Powering Flexible Spaces

The CMS Freedom FR210 is taking portable power to the next level. With most modern workplaces incorporating movable desks and collaboration areas, it is important that power can still be easily supplied to these areas. The FR210 enables power to be provided anywhere without the limitation of needing to core a floor and be tethered to electrical cables in floor boxes or grommets. From training tables and desks on wheels to lounges, loose furniture and portable AV, FR210 provides the solutions to suit the demands of the future of work.

It is capable of streaming up to 24V DC and/or 100W USB-C PD so if you're looking for a high-capacity high-output portable power solution, without the need to plug cables into walls, then look no further than the Freedom FR210 Series.



FR210CS - Charging Station



FR210DS - Docking Station



FR210PB - Power Bank

### Colours Available

- Black
- White

### Key features

- Delivery of power via DC, USB C and USB A outputs
- Stackable Power Units capable of providing up to 630Wh (3x power banks) of power
- Fast and Easy Mounting of Docking Station
- Battery Life Indicator Light

## Application Environments

### Training/Flip Table




 Echo Duo - Battery Powering USB A/C & Wireless



### Workstation



 Docking Station - Powers Laptop and connected to Monitor (DC)

 Inverter - Powers Monitor (AC)

 Echo Duo - Battery Powering USB A/C & Wireless (DC)



### Mobile Media Stand



 TV / Webcam

 Inverter - Powering TV & Echo GPO's (AC)

 Echo Trio - Battery Powering USB A/C (DC)



## Products Compatible (Without Inverter)

### Using DC Output

The FR210 Power Bank provides DC Power and once connected to the Docking Station, it provides the ability for certain products to be powered using the 2x DC Output's located at the back of the docking station rather than needing an inverter to convert the power to AC. Specific XT60 leads can be provided to be connected from the Docking Station to one or more products listed below.



Echo Wireless Charger



Echo USB A/C Charger



Echo USB A/C + Wireless



THD 100 Docking Station



XT60 Plug to XT60 Socket



XT60 Y Splitter



XT60 Plug to DC Jack

### Example of Product Connections (Using Multiple Products Together)

DC Out 2	12V		Echo Series Wireless, A/C, A/C + Wireless	CMS Inverter	THD-100
	18V				
	20V				
	24V				
DC Out 1	17-25.5V				

## Products Compatible (With Inverter)

### Converting DC to AC Power

As the FR210 Power Bank is designed to provide DC Power, a CMS inverter is required when you need to connect to a GPO. Once you add an inverter into the FR210 connection process, the possibilities of products within our CMS range is expanded greatly from a wireless product to a power rail or in-desk unit.

View some of these products below:



CMS Inverter



Nova & Viva Power Rail



Athena Power Rail



Zeus Power Rail



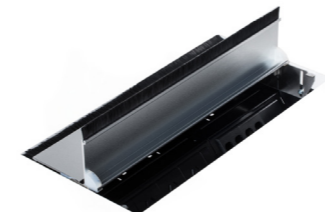
Echo Module



KonexUS Module



Blinky Module



Executive Box



GPO's



Neo Box

## Product Details

### FR210 Battery & Charger

<b>FR210PBP**</b>	1x 118W USB-A/C PD Power Bank (Push Button Release)
<b>FR210PBK**</b>	1x 118W USB-A/C PD Power Bank (Key Release)
<b>FR210DS**</b>	1x Docking Station With Multiple Outputs
<b>FR210CS**</b>	1x Charging Station + 150W Power Supply With 10A 3-Pin Plug

### FR210 DC Leads

<b>FRLA10BK</b>	XT60 Plug to XT60 Socket, 1000mm – Black
<b>FRLB10BK</b>	XT60 Plug to 5.5 x 2.5 DC Jack Plug, 1000mm – Black
<b>FRLC10BK</b>	XT60 Plug to 3.5 x 1.3 DC Jack Plug, 1000mm – Black
<b>FRLD10BK</b>	XT60 Plug to 7.5 x 5 DC Jack Plug, 1000mm – Black
<b>FRSYBK</b>	XT60 Y Splitter (1 in 2 out) – Black

### DC Echo Series

<b>FRECUAC**</b>	Echo USB A/C 140W Charging, 1000mm Black XT60 Lead to XT60 Socket
<b>FRECW**</b>	Echo Wireless Fast-Charge Module (15W), 1000mm Black XT60 Lead to XT60 Socket
<b>FREDA1U**</b>	Echo Duo - 1x GPO, USB A/C PD Fast Charge Module (140W Shared), 500mm TAG Lead for GPO, 1000mm Black XT60 to XT60 Socket
<b>FREDUW**</b>	Echo Duo - 1x USB A/C PD Fast Charge Module (140W Shared), Wireless Fast-charge (15W), 1000mm Black XT60 Lead to XT60 Socket
<b>FRETUWU**</b>	Echo Trio - 2x USB A/C Fast Charge Module (140W Shared), Wireless Fast-charge Module (15W), 1000mm Black XT60 Lead to XT60 Socket
<b>FRETA1UW**</b>	Echo Trio - 1x GPO, USB A/C PD Fast Charge Module (140W Shared), Wireless Fast-Charge Module (15W), 1000mm Black XT60 Lead to XT60 Socket

#### Notes:

- \*\* Denotes Colour: Black (BK), White (WT)

Freedom Batteries are for use with IT/AV Equipment Only

## Product Specifications

### Power Bank (FR210 PBP /FR210 PB4)

<b>Capacity</b>	9,540mAh (206wh)
<b>Charging Output</b>	<b>USB-C Port</b> PD 100W (5V3A,9V3A,12V3A,15V3A,20V5A,) or QC3.0/2.0 18W ( 5V/3A,9V/2A,12V/1.5A) <b>USB-A Port</b> QC3.0/2.0 18W ( 5V/3A,9V/2A,12V/1.5A)
<b>Charging Total</b>	Total 118W (PD100W and QC18W)
<b>Protection</b>	Over-Charge Over-Discharge Over-Current Over-Temperature Short Circuit
<b>Charging Input Methods</b>	USB-C Port When Factory Enabled/(Disabled By Default): PD 60W Max ( 5V,9V,12V,15V,20V) Charging Station Docking Station
<b>Indicators</b>	4pcs x LEDs White Colour
<b>Size</b>	L=251.8 W=151.4 H=38.1
<b>Weight</b>	1.54 kg
<b>Compliance</b>	IEC62133 & IEC62368 UL2056 CE-EMC (EN 55032, EN 55035) RoHS UN38.3 USB-IF(PD)

### Docking Station (FR210PS)

<b>Input</b>	7.4x5.0 DC Jack (To Recharge Units While Docked) 20v/5A
<b>Output Ports</b>	USB-C output : PD 100W (5V3A,9V3A,12V3A,15V3A,20V5A,) or QC3.0/2.0 18W ( 5V/3A,9V/2A,12V/1.5A). USB-A output : QC3.0/2.0 18W ( 5V/3A,9V/2A,12V/1.5A). DC OUT1 (XT60) : 18-25.2V( Battery voltage output directly) ,16-18A. DC OUT2 ( XT60) : 12V/18V/20V/24V,11A. Max combined output 150W - 1 docked, 350W - 2+ units docked
<b>Docking Capability</b>	Up to 3x FR210 Power Banks (630Wh)
<b>Capacity Indicators</b>	4x White LEDs To Indicate The Battery Level Of The Docked Power Banks.
<b>Size</b>	L= 275.9 W=152.2 H31.6
<b>Weight</b>	0.94 kg
<b>Compliance</b>	RCM (AS/NZS CISPR32) CE-EMC (EN 55032, EN 55035)

### Charging Station (FR210CS)

<b>Input</b>	7.4x5.0 DC jack : 20V7.5A
<b>Max Power Banks</b>	Up To Max 5x Power Banks.
<b>LED Indicator</b>	Always On When Power Available.
<b>Charging Time</b>	Charging Station – 5 Docked (DC Input Power 150W) : 9-10 hours Charging Station – 3 Docked (DC Input Power 150W) : 6-7 hours Charging Station – 1 Docked (DC Input Power 150W) : 2-3 hours
<b>Size</b>	L= 326.4 W=199.3 H=99
<b>Weight</b>	1.88 kg
<b>Compliance</b>	RCM (AS/NZD CISPR32) CE-EMS (EN 55032, EN 55035)

**Lithium Battery Disclaimer:** [Please click here for our Freedom Lithium Ion Battery Disclaimer.](#)