

Humanscale

World LM

Designed by Niels Diffrient





World LM is an updated version of Niels’ renowned World chair, the most minimal, yet fully functional task chair ever made. Featuring the same innovative tri-panel mesh backrest and weight-sensitive recline as its predecessor, World LM is a cost-effective solution that delivers unmatched ergonomic support and the ultimate user-friendly sitting experience.

Like all Humanscale chairs, World LM’s design eliminates the need for traditional mechanisms by using the laws of physics and the sitter’s body weight to offer a perfect recline. World LM features adjustable armrests that are attached to the back of the chair and move with the user, providing custom comfort throughout the workday.

Sustainability Certification

SCS Indoor Advantage™ Gold
BIFMA LEVEL® 3
DECLARE® - Red List Free
Health Product Declaration (HPD)



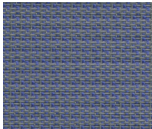


Warranty

12 Years, Component and Parts
5 Years, Fabric/Cushions

Features

- Weight Compensation Recline utilizes the sitter’s weight to provide automatic and personalized support in any position without the need for adjusting knobs and levers
- Pivoting backrest automatically moves with the sitter, offering perfect lumbar support throughout different postures/positions
- Tri-panel back with Form Sensing Mesh™ technology provides tailor-made lumbar support that instantly adjusts to each sitter without knobs, levers, or button
- Comes in classic all-mesh design or with optional contoured foam seat. Foam seat is sculpted to reduce pressure points and provide exceptional weight distribution, supporting long-term comfort and improved circulation
- Fits 95% of the population: Height: 5’0” - 6’4” (152 cm - 193 cm); Weight: 100 lbs - 400 lbs (45.4 kg - 181.4 kg)
- Stool Height option available
- Caster Options: Hard, Soft

Material and Color Options

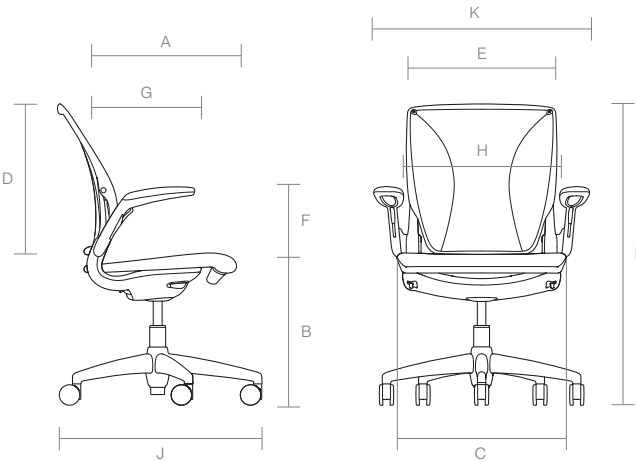
Frame	Mesh	Upholstered Seat Textile Options		
		Fabric		
				
Black	Gray	Catena 5 Colors	Corde 4 13 Colors	Autumn 14 Colors

Seating

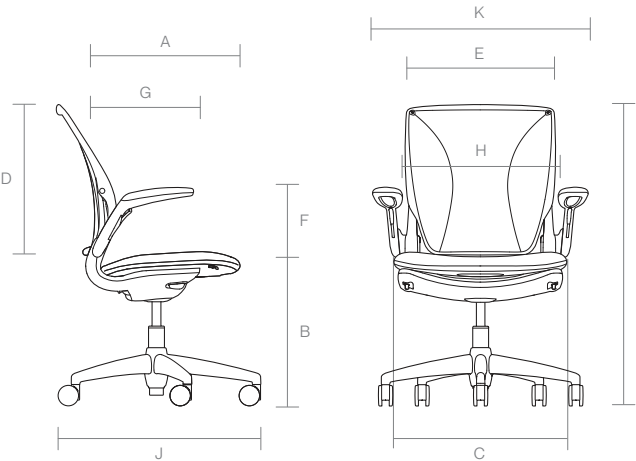
Product Specifications

	Imperial	Metric
A Seat Depth	16.4 in Mesh 17.9 in Upholstered	416 mm Mesh 454 mm Upholstered
B Seat Height	15.6 in - 20.7 in, Standard Cylinder - Mesh 16 in - 21 in, Standard Cylinder - Upholstered 18.1 in - 25.6 in – 8" High Cylinder w/ 20" Foot Ring	397 mm - 527 mm, Standard Cylinder - Mesh 425 mm - 545, Standard Cylinder - Upholstered 460 mm - 651 mm – 203 mm High Cylinder w/ 508 mm Foot Ring
C Seat Width	20.2 in Mesh 20.8 in Upholstered	513 mm Mesh 528 mm Upholstered
D Backrest Height	22.5 in	572 mm
E Backrest Width	19 in	483 mm
F Armrest Height	9.5 in Fixed 7.2 in - 10.75 in Adjustable	241.3 mm Fixed 183 mm - 273 mm Adjustable
G Armrest Length	8.4 in	213 mm
H Distance Between Armrests	18.75 in	476.25 mm
I Height	35.6 in - 40.75 in – Standard Cylinder 38.1 in - 45.6 in – 8" High Cylinder w/ 20" Foot Ring 35 in - 39.75 in – 5"Return-to-Height Cylinder	905 mm - 1,035 mm – Standard Cylinder 968 mm - 1,159 mm – 203 mm High Cylinder w/ 508 mm Foot Ring 889 mm - 1,010 mm – 127 mm Return-to-Height Cylinder
J Base Diameter	25in with Arms 21 in without Arms	635 mm with Arms 533 mm without Arms
K Chair Width	25.75 in	654 mm
Chair Weight	26 lbs Armless 27 lbs Arms	11.8 kg Armless 12.2 kg Arms
Recline Range	17° Recline + 8° Backrest Tilt	

Mesh



Upholstered





World LM

World LM, the streamlined edition of the original World, offers the same groundbreaking tri-panel mesh backrest and weight-sensitive recline for effortless ergonomic support. With fewer parts and priced with a purpose, it's efficiently crafted for exceptional comfort without compromise —now with the added option of a sculpted foam seat upholstered in your choice of textile.



Achieving More With Less

While the average task chair uses 200+ components, World LM is built with just 78. That simplicity reduces the need for ongoing repairs, extending it's already long life, and minimizing its impact on the environment.



A World Of Options, Tailored To You



- Adjustable Arms
- Made to fit 95% of all body types
- Form Sensing Mesh
- Pivoting backrest
- Self-adjusting recline
- Available in Upholstered or low-abrasion Mesh seat

Promotes Spontaneous Movement

Niels Diffrient’s revolutionary approach to chair design fundamentally changed the relationship between the user and their seating, replacing cumbersome controls like locks, knobs, and levers with an intuitive system using principles of physics and the sitter’s own body weight. His work embodies a philosophy of simplicity, where the chair adapts automatically to the user, providing instant support across any position without requiring manual adjustments.

This ethos makes World LM’s functionality “invisible to the user,” ensuring that anyone can sit comfortably without instructions. It also encourages healthy, spontaneous movement while lending the sitter ergonomic support throughout every posture.



Patented Form Sensing Mesh™

World LM's tri-panel, low stretch mesh back ensures a personalized fit for every user, conforming to the body's natural contours to deliver tailored lumbar support and maximum adaptability. Unlike traditional single-panel mesh chairs, Form Sensing Mesh takes on the exact shape of the sitter's back, as if it were made just for them. Perfect for dynamic workspaces, World LM promotes balanced movement and unmatched comfort throughout the day.



Niels Diffrient was inspired by the way clothing designers create three-dimensional shapes using panels of fabric.

This technique allows the backrest to take on whatever shape is pushed against it.



True Minimalism and Great Ergonomics Coexist Beautifully

Built with just 78 durable components, World LM is a testament to the power of simplicity. With its lightweight construction and advanced materials, the chair proves that great design can be both beautifully minimal and supremely functional, setting a new standard for ergonomic excellence.



Express Yourself

World LM redefines versatility with a curated selection of stunning textiles. Choose from an extensive range of *Autumn* and *Corde 4* fabrics to elevate the chair's aesthetic and seamlessly integrate it into any space—whether it's a professional office or a stylish home setup. With its perfect balance of comfort and customization, World LM looks as good as it feels.



Design by Niels Diffrient

With a career spanning more than 50 years, industrial designer Niels Diffrient revolutionized the industry by focusing on the human experience. He developed a deep understanding of how people live, work, and interact with their environments, creating products with timeless forms that solve functional problems as simply and elegantly as possible. Above all, Diffrient put the user first. As he once stated, *“The best way to know what people want and need is not by asking them, but by understanding them.”*

For World LM, Diffrient sought to solve a critical issue: traditional task chairs are complicated to adjust and often leave users in unhealthy, unsupported postures. His solution replaces bulky excesses with an innovative Gravity Mechanism™ that uses the sitter’s body weight to provide automatic recline and balanced support. Combined with the tri-panel, low-stretch mesh backrest that adapts to the body’s natural curves, World LM delivers effortless comfort in a simple, lightweight design.



Niels Diffrient

“The best way to know what people want and need is not by asking them, but by understanding them.”

— Niels Diffrient

Sustainability

At Humanscale, we believe the best designs in the world achieve more with less, so we act accordingly. World LM is crafted with fewer parts than the standard task chair and its production blends eco-conscious materials with circular design principles to minimize environmental impact. Highlights include:

Certified Eco-Leadership: BIFMA LEVEL® 3, SCS Indoor Advantage, and certified DECLARE® - LBC Red List Free ensure adherence to the highest environmental and health standards.

Circular Design: Made from 38% pre-consumer recycled content and is 95% recyclable at the end of its lifecycle.

38%
Pre-consumer recycled content

95%
Recyclable at the end of its lifecycle



A Streamlined Rendition of the Award-Winning World Chair



Chicago Athenaeum Museum of Architecture Good Design Award



reddot

Red Dot Design Award Winner



Mixology People's Choice Award Winner



Interior Design Best of Year Award



GIO Design Awards Winner



Tailored for Any Environment

Providing effortless ergonomic support in minimalist form, World LM is designed for modern offices, agile workspaces, and collaborative environments. Its lightweight design and advanced functionality make it the perfect solution for spaces where comfort, simplicity, and adaptability are key.



Built to Last

World LM combines timeless design with durable materials, ensuring lasting comfort and performance. It's a chair made to move with you, for years to come.

- World LM's testing surpasses industry standards, greatly exceeding the limits of most other chairs. This makes for long-lasting comfort across years of heavy use.
- Our cylinders are cleaner and more reliable than cheaper greased cylinders, sealing grease in the lower unit to protect both user and chair.
- Our Duron arm pads have a multi-layer design allowing for a softer cushion and a more durable cover.
- Lightweight design makes it exceptionally easy to assemble and relocate.

Warranty
World LM comes with a 12-year warranty for components and parts and a five-year warranty for fabric and cushions.



Duron arm pads







Statement of Line



World LM Task

- Frame**
- Black
 - Gray
- Cylinder**
- 5” Standard
- Arms**
- Armless
 - Fixed Duron Arms
 - Adjustable Duron Arms
- Casters**
- Hard
 - Soft



World LM Meeting

- Frame**
- Black
 - Gray
- Cylinder**
- 5” Standard
 - 5” Return-to-Height
- Arms**
- Armless
 - Fixed Duron Arms
 - Adjustable Duron Arms
- Casters**
- Hard
 - Soft



World LM Stool

- Frame**
- Black
 - Gray
- Cylinder**
- 8” High with 20” Footring
- Arms**
- Armless
 - Fixed Duron Arms
 - Adjustable Duron Arms
- Casters**
- Soft

Material and Color Options

Frame



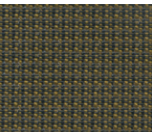
Black



Gray

Mesh

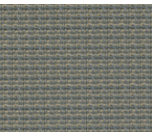
Catena



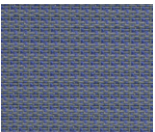
Bayberry



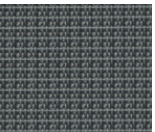
Black



Caraway



Cornflower



Poppyseed

Upholstered Seat Textile Options

Corde 4



Azure



Balsam



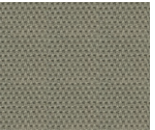
Black



Dark Brown



Deep Violet



Driftwood



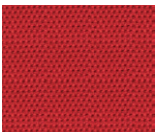
Graphite



Medium Grey



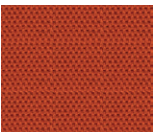
Navy



Parma Red



Peacock

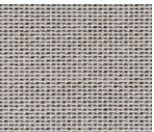


Pumpkin

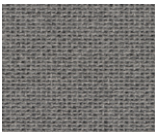


Thalo

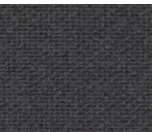
Autumn



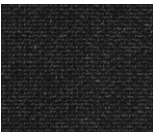
0101



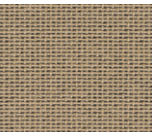
0131



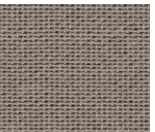
0171



0191



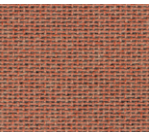
0221



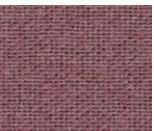
0331



0361



0551



0651



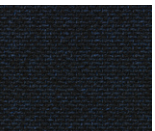
0681



0751



0771



0791



0971

Humanscale is the global leader in high-performance ergonomic products that improve the health and comfort of work life. From chairs to height-adjustable desks to lighting and computer support products, Humanscale transforms office necessities into minimally elegant ergonomic solutions that encourage movement wherever work happens. With 29 products certified climate-positive by the International Living Future Institute, Humanscale is committed to making a planet-positive impact on the earth as well as our customers.



For more information, please visit [Humanscale.com](https://www.humanscale.com).
© 2025 Humanscale. All Rights Reserved.

Humanscale